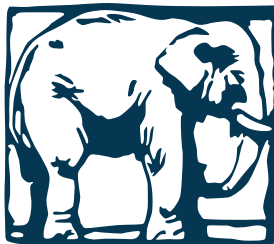
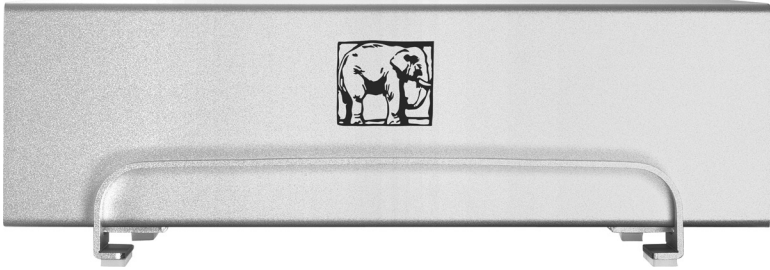


elephanraid

**RAID enclosure with
two matching hard drives**



elephant storage

www.elephantstorage.com

Package Contents

- **elephantraid** dual hard drive enclosure
- 2x identical SATA II hard drives (manufacturer, capacity, RPM, cache)
- 1x USB 2.0 cable
- 1x FireWire 400 (1394a) 6 pin to 6 pin cable
- 1x FireWire 800 (1394b) 9 pin to 9 pin cable
- 1x e-SATA cable
- External AC power adapter 100-240V, universal auto-switching
- User manual and warranty information

Hardware & Software Compatibility

Mac Requirements:

Minimum Apple G4 processor, 128MB RAM

USB 1.1 equipped Mac; Mac OS 10.1.5 or above

USB 2.0 equipped Mac; Mac OS 10.2 or above

1394a equipped Mac; Mac OS 10.1.5 or above

1394b equipped Mac; Mac OS 10.2 or above

PC Requirements:

Minimum Intel Pentium III CPU 500MHz, 128MB RAM

USB 1.1 equipped PC; Windows 2000/XP/Vista/Windows 7

USB 2.0 equipped PC; Windows 2000/XP/Vista/Windows 7

1394a equipped PC; Windows 2000/XP/Vista/Windows 7

1394b equipped PC; Windows 2000/XP/Vista/Windows 7

Care & feeding of your new **elephantraid**

• **IMPORTANT!** Let your **elephantraid** breathe! For this reason, your **elephantraid** requires that the airflow around it be unobstructed. Do not block the front grill.

• **Keep it cool!** Do not place your **elephantraid** on a hot surface. Keep out of direct sunlight and other heat sources. Storage in freezing conditions is NOT recommended. If your **elephantraid** has been subjected to extremes of heat or cold, please allow the drive to acclimatize to room temperature before use.

• **Keep it dry!** Really, does your coffee cup need to be that close to your drive?

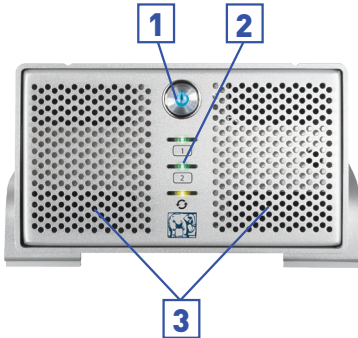
• **Check those cables!** Your **elephantraid** plays well with others but please ensure the cables (including other peripheral cables) you're plugging into your **elephantraid** are compatible and not damaged.

elephantraid - Detailed View

Front View

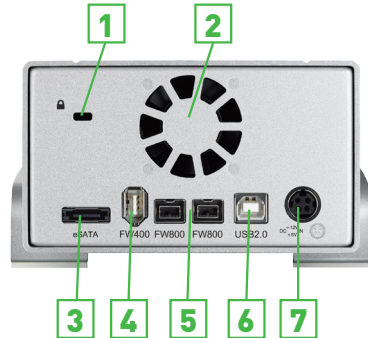
1. ON/OFF switch (blue when on)
2. LED indication for hard drives (green = data access, red = error)
3. Ventilation holes

Note: To turn on, press ON/OFF switch and release. To turn off, press ON/OFF switch and hold for 3 seconds then release.



Back View

1. Kensington Security lock port
2. Fan for ventilation
3. e-SATA port
4. FireWire* 400 port (1394a)
5. FireWire* 800 ports (1394b)
6. USB* 2.0 port
7. AC adapter port



*Only one interface, USB or FireWire or e-SATA, can be used at any given time.

Data Backup

To protect your files and help prevent the loss of your data, we strongly recommend that you keep two copies of your data, one copy on your **elephantraid** and a second copy either on your internal drive or another storage media such as CD, DVD, Tape or an additional **elephantdrive**.

Any loss or corruption of data while using the elephantraid is the sole responsibility of the user, and under no circumstances will the manufacturer be held liable for compensation or the recovery of this data.

RAID Setting Options

IMPORTANT: Opening your RAID drive will void the warranty!

Having the RAID setup changed will require you to re-format both drives. Make sure you back up all data before doing so!

RAID 0 - Striping (default) is the default setting for your **elephantdrive**. For alternate settings such as JOB0 or RAID 1 (mirroring), please bring this device to Carbon Computing for fast service. www.carbonation.com

System Setup

Connection to your Computer

A few tips on how to use your **elephantraid**:

- Check the cables for visible damage before turning it on
- Do not expose the product to water or humid conditions
- Do not cover the enclosure's ventilation holes

This elephantraid has been set up with a RAID 0 (Striping) for Apple computers running Mac OS X. This setting is ideal for the fast throughput required in Pro Video, Pro Audio and Pro Photography work environments.

Hard Disk Mode

When using your **elephantraid**, the disk will mount to the first connection that is presented. This will remain the default setting until the device is next restarted. When not in use, turn off the power.

RAID Setup

RAID 0 - Striping: Default Setting (Mac OS X)

Used where speed is the primary objective, RAID Level 0 (also called "striping") is not redundant, and therefore does not technically conform to the definition of a RAID. This form of array splits each piece of data across both of the drives in segments; since data is written without any form of parity data-checking, it allows for the fastest data transfer of the other modes. However, if one drive becomes damaged, the whole array can become corrupted. Always keep a back up!

RAID 1 - Mirroring:

This mode requires 2 identical drives to implement. A RAID 1 creates an exact copy (or mirror) of a set of data on the second drive. This is useful when reliability and backup are more important than data capacity. The available capacity to the user will only be as large as a single drive but when one of the hard drives fails, it can be replaced and the data rebuilt automatically. The **elephantraid** enclosure has an LED indication at the front to show the status of the hard drives. As long as both Drive1 and Drive2 are working OK, the LED is green. When a drive fails, the corresponding LED will turn red. In this event please contact us though email: rma@elephantstorage.com

Other RAID setups:

Non-RAID:

The drives will show up as two independent drives. Use this if you have only installed one drive or two different drives (not the same capacity and brand).

JBOD or RAID 0 - Spanning:

The two drives show up as one large single drive. Spanning is an array (not RAID) that is written sequentially across the two drives. By itself, it does not provide any performance or redundancy benefits.

Installation on a Macintosh

This **elephantraid** has been setup already. You do not need to change anything, unless you prefer a different setup.

- Turn on your computer and start Mac OS
- Connect the **elephantraid** and turn it on
- No driver installation required
- The **elephantraid** will mount and show up on your desktop

For more information about formatting, see “Partitioning & Formatting”.

Unmounting and Disconnecting your **elephantraid**:

- Drag the **elephantraid** hard drive icon into the trash bin
- Turn off your device

Installation on a PC

The drives have been pre-installed. However, to use on a PC, you must re-format your **elephantraid** to meet PC based specifications.

- Turn on your Computer and start Windows
- Connect the **elephantraid** and turn it on
- Let Windows search and install the driver automatically
- Open “My Computer” to see your external hard drive

For more information about formatting, see “Partitioning & Formatting”.

Unmounting and Disconnecting your **elephantraid**:

For the safe removal of your **elephantraid** and to assure that no data is lost, always follow the correct unplug procedure. Otherwise, an error message will appear.

- Click on the taskbar icon for external hardware
- Choose your external hard drive and confirm to remove it

Partitioning & Formatting

IMPORTANT! Be aware that this will destroy all your existing data on the drive, so make sure you have a backup! This step is usually only required if you change the format or want to erase all data on your **elephantraid**.

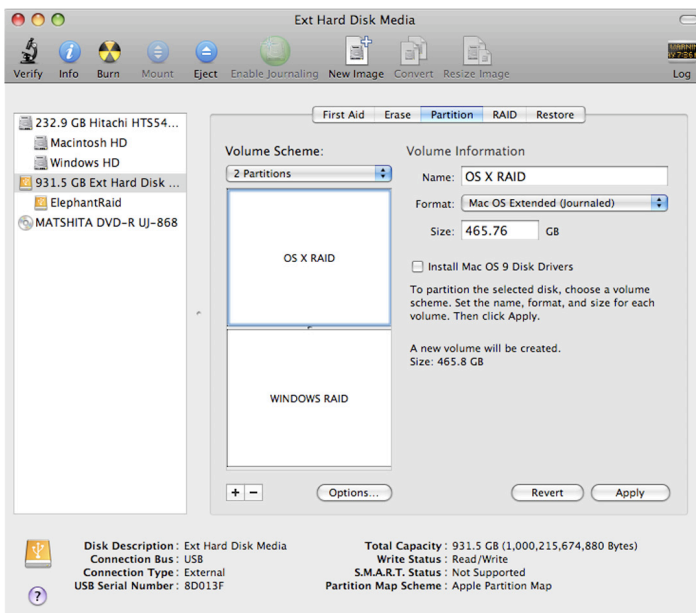
Choosing a files system to format your drives:

- Mac OS X - HFS+ (Mac OS Extended)
- Windows 2000/XP/Vista - NTFS
- To use it on both PC and Mac - FAT32

Mac OS

For Mac OS X, use the Disk Utility to format and create partitions on your external disk.

- Select "Disk Utility" in the utilities folder
- Choose your external drive and format it according to your requirement



For Mac OS X, we recommend formatting the drive using the native Mac file system HFS+ also known as Mac OS Extended.

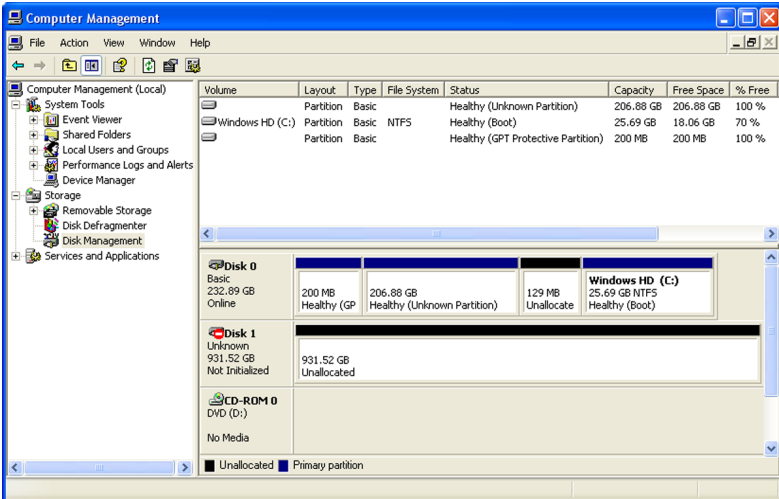
If you want to use your drive on a PC running Microsoft Windows as well as on your Mac, we recommend you to use the FAT32 file system. On your Mac, select MS-DOS when formatting it. Note: The file size for a single file on FAT32 is limited to 4GB.

If the JBOD or RAID mode is enabled, you will only see one large drive instead of two separate hard drives.

PC running Windows

Disk Management Program

- Right click on “My Computer” and choose “Manage”
- Select “Disk Management”
- Choose the drive you want to format and right click on it for further commands (Choose New Partition)
- Follow the Partition Wizard to setup the drive



For Win2000, WinXP and Windows Vista, we recommend formatting the drive using the NTFS file system.

If you are using the FAT32 file system to format the drive on Win2000, WinXP or Windows Vista, the biggest single partition you can create will be 32GB. To create larger partitions, you need to use a 3rd party application or change to NTFS format.

Thank you very much for purchasing your elephant storage **elephantraid**. For more quality storage solutions please visit **www.elephantstorage.com**.

Congratulations. You have RTFM (Read the FireWire Manual) ENJOY!

Products and brand names may be trademarks or registered trademarks of their respective owners.

© Copyright 2010 by elephant storage. All rights reserved. The information contained within is believed to be accurate and reliable. elephant storage assumes no responsibility for any errors contained within. elephant storage reserves the right to make changes in the specifications and/or design of the product without prior notice.

2 Year Limited Parts and Labour Warranty

Elephant Storage (herein "ES") warrants, to the original purchaser, that this equipment shall be free of defects in materials and workmanship for a period of two (2) years from the date of original retail purchase when the equipment is used normally and is properly serviced when needed. If you discover a defect covered by the warranty set forth above, your sole and exclusive remedy will be for ES, in its sole discretion to (i) repair or replace the product at no charge to you; or, if a repaired unit or replacement product is not available, (ii) to refund the current market value of your product. You acknowledge and agree that replacement product, at the sole option of ES, may be a new product or a remanufactured product. In order to receive the remedy set forth above, you must return the product during the warranty period and include with each returned product (i) a copy of your original purchase invoice to verify your warranty; (ii) a Return Material Authorization number; (iii) your name, address, e-mail address and telephone number; (iv) a copy of the bill of sale bearing the appropriate ES serial numbers as proof of date of original retail purchase; and (v) a description of the problem. Customers must pay all transportation costs for returned product. Product may be returned to (i) the authorized ES dealer from whom you purchased it; (ii) any other authorized ES dealer; or (iii) any ES authorized repair facility. This warranty applies only to hardware products; ES software, media, and manuals are licensed and warranted pursuant to separate written agreement. This warranty does not apply if the product has been misused or has been damaged by accident, misused, or misapplication; if it has been modified without permission of ES; or if any ES serial number has been removed or defaced.

EXCEPT FOR THE LIMITED WARRANTY SET FORTH ABOVE, ALL PRODUCTS ARE SOLD "AS IS" AND ES EXPRESSLY DISCLAIMS ALL WARRANTIES OF ANY KIND, WHETHER EXPRESS, IMPLIED OR STATUTORY, INCLUDING THE IMPLIED WARRANTIES OF MERCHANTABILITY, NON INFRINGEMENT AND FITNESS FOR A PARTICULAR PURPOSE. WITHOUT FURTHER LIMITED THE GENERALITY OF THE FOREGOING, DOES NOT WARRANT (1) THE PERFORMANCE OR RESULTS OBTAINED FROM USING THIS PRODUCT, (2) THAT THE PRODUCT IS APPROPRIATE FOR THE CUSTOMER'S PURPOSES, (3) THE MANUAL IS ERROR FREE, OR (4) THAT NO DATA WILL BE LOST WHILE USING THE PRODUCT. THE ENTIRE RISK AS TO THE RESULTS AND PERFORMANCE IS ASSUMED BY THE CUSTOMER. THE WARRANTY AND REMEDIES SET FORTH ABOVE ARE EXCLUSIVE AND IN LIEU OF ALL OTHERS, ORAL OR WRITTEN, EXPRESS OR IMPLIED.

No ES dealer, agent, or employee is authorized to make any modification, extension, or addition to this warranty.

ES IS NOT RESPONSIBLE FOR SPECIAL, INCIDENTAL, OR CONSEQUENTIAL DAMAGES RESULTING FROM ANY BREACH OF WARRANTY, OR UNDER ANY LEGAL THEORY, INCLUDING LOST PROFITS, DOWNTIME, GOODWILL, DAMAGE TO OR REPLACEMENT OF EQUIPMENT AND PROPERTY, AND ANY COSTS OF RECOVERING, REPROGRAMMING, OR REPRODUCING ANY PROGRAM OR DATA STORED IN OR USED WITH ES PRODUCTS EVEN IF IT HAS BEEN ADVISED OF THE POSSIBILITY OF SUCH DAMAGES.

Your opening of this package, your use of this product, or your online registration of this product acknowledges that you have read and agreed to the terms of this agreement. You further agree that it is the complete and exclusive state of the agreement between us and supersedes any proposal or prior agreement, oral or written, and any other communications between us relating to the subject matter of this agreement.

register: www.elephantstorage.com

sales: sales@elephantstorage.com

repair/return: rma@elephantstorage.com